

GUIDER II_s

With large building volume and multiple nozzle diameter options, Guider IIs can meet diversity printing demands of high strength and conventional filaments in offices, schools and industries. Adopting air filtration system, it is safer and more environmental-friendly that Guider IIs is your prior choice to improve production and manufacturing efficiency.



300°C All Upgrade High-temperature Extruder

- It can reach to 300°C, so as to support more filament printing.
- Instead of coming as a spare part.

FILAMENT

ASA

PETG

PC

PA

ABS

PLA

PLA Change Color

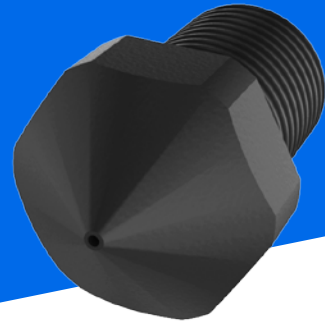
PLA METAL

PA-CF

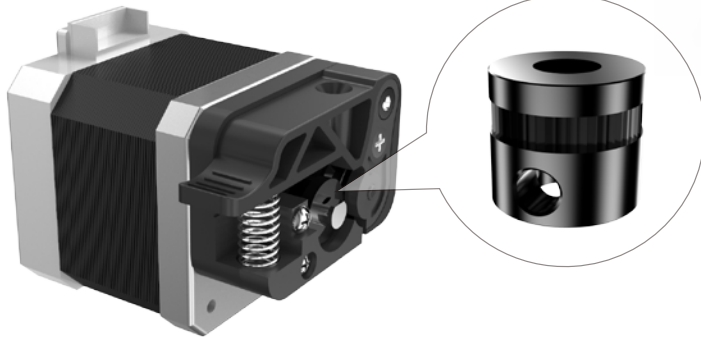
PA-GF

Hardened Nozzle

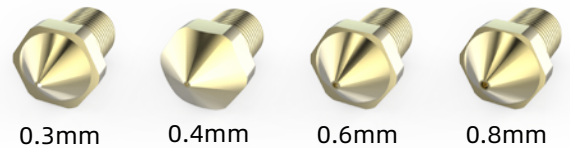
Support conforming filament, such as PA-CF and PA-GF; It also supports common filament.



0.4mm hardened nozzle (1.75)



Hardened feeding gear for printing carbon filled filament. Custom machined teeth on the hobbled gearing for serious grip on filament.



0.3mm

0.4mm

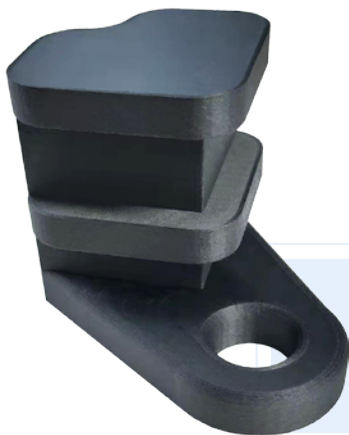
0.6mm

0.8mm

Multi nozzle options
(1.75)



PA-GF Model



PA-CF Model

